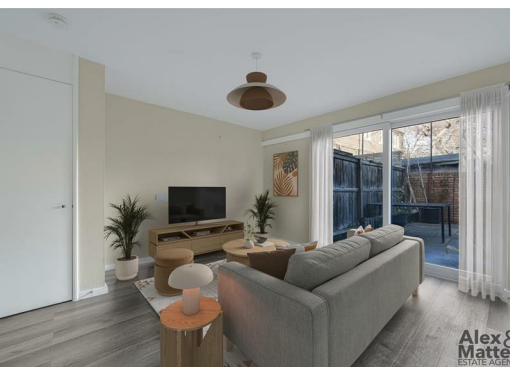




Alex & Matteo
ESTATE AGENTS



Alex & Matteo
ESTATE AGENTS



Alex & Matteo
ESTATE AGENTS



Hazel Way, London, SE1 5XJ

****THE FURNITURE SHOWN IN THE IMAGE HAS BEEN VIRTUALLY STAGED****

A well-kept one bedroom maisonette located moments from Bermondsey Spa Gardens.

The property boasts an open-plan modern kitchen and reception room complete with access to the private garden; built in storage can be found in the reception room. The first floor features a spacious double bedroom, and stylish bathroom with built-in storage.

The property is surrounded by plenty of local amenities such as cafes, restaurants, bars, and excellent bus links into central London.

- Well-Kept One Bedroom Maisonette
- Private Garden
- Modern Kitchen
- Plenty of Storage
- Excellent Location
- Good Transport Links

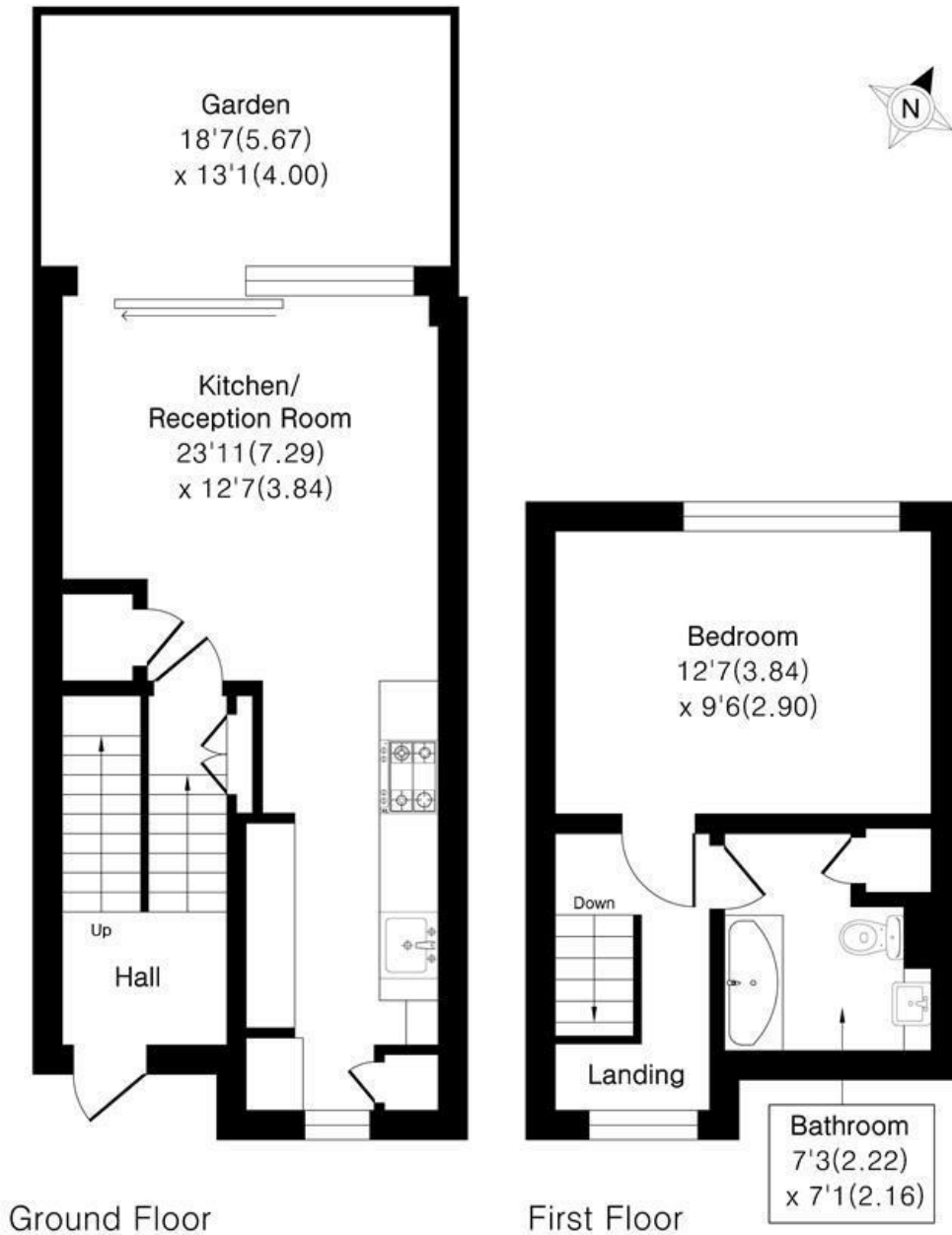
Alex & Matteo
ESTATE AGENTS

£1,850 Per month

Hazel Way SE1

Approximate Area = 560 sq ft / 52.0 sq m

For identification only - Not To Scale



Floor plan Produced in accordance with RICS Property Measurement 2nd Edition.
Incorporating International Property Measurement Standards (IPMS2 Residential).
Produced for Alex & Matteo Estate Agents.

Alex & Matteo
ESTATE AGENTS

